

MARONDA
Homes

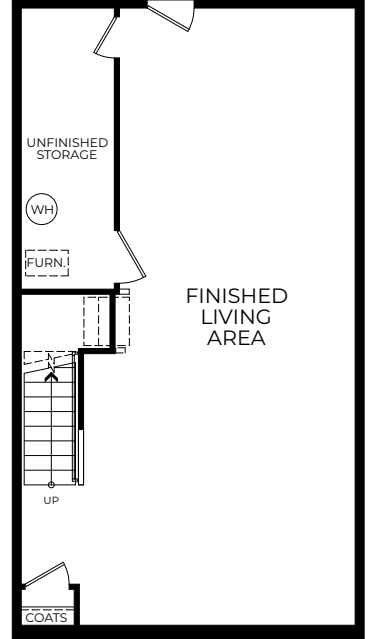
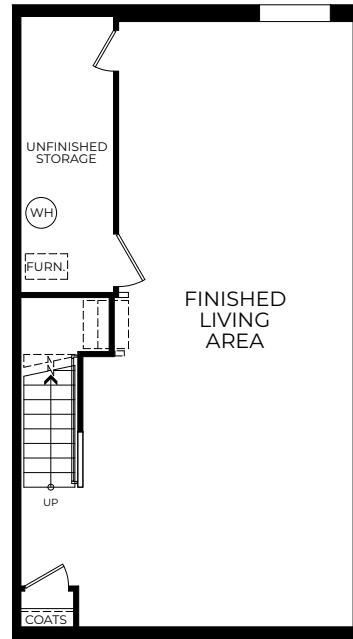
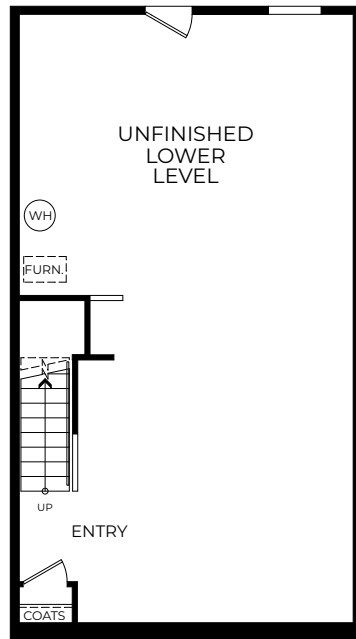
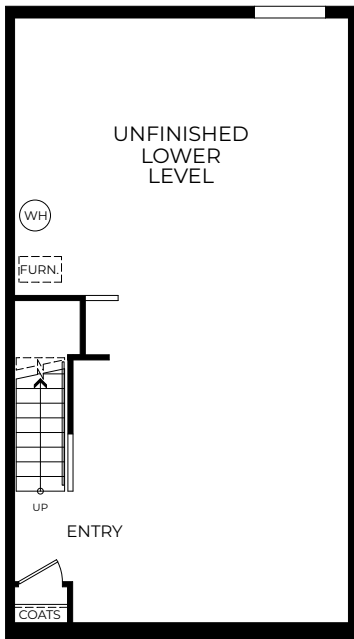
ST PAUL
Elevation E
Townhome Series





- 3 Bedrooms
- 1 Car Garage
- 2.5-3.5 Bathrooms
- 1,966-1,989 Finished Sq. Ft.



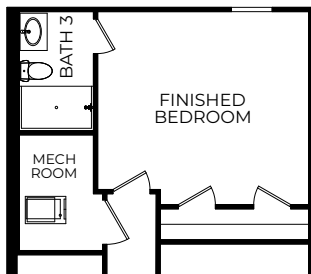


OPTIONAL UNFINISHED LOWER
LEVEL NO GARAGE HIGH SIDE
FRONT GARAGE

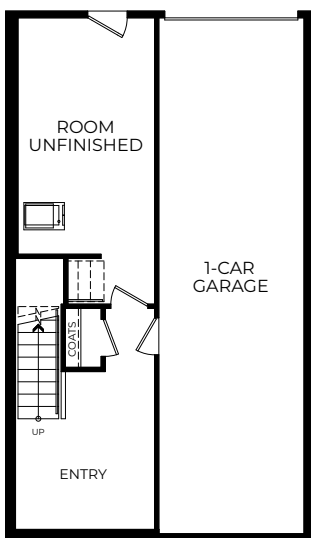
OPTIONAL UNFINISHED LOWER
LEVEL NO GARAGE LOW SIDE
FRONT GARAGE

OPTIONAL FINISHED LOWER
LEVEL NO GARAGE HIGH SIDE
FRONT GARAGE

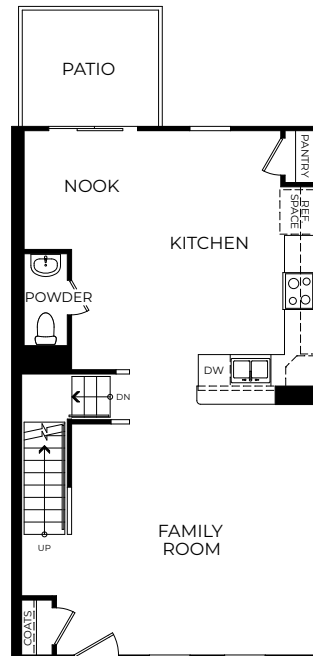
OPTIONAL FINISHED LOWER
LEVEL NO GARAGE LOW SIDE
FRONT GARAGE



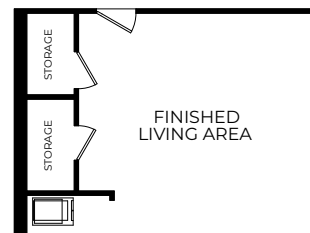
OPTIONAL FINISHED LOWER
LEVEL BEDROOM AND BATH
FRONT GARAGE



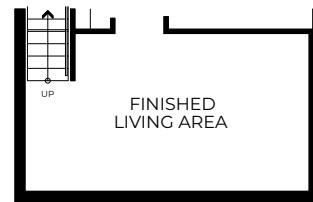
OPTIONAL
LOWER LEVEL
REAR GARAGE



OPTIONAL
REAR GARAGE & NO GARAGE
AT FIRST FLOOR ELEVATION E



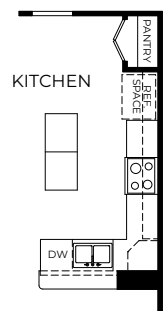
OPTIONAL FINISHED LOWER
LEVEL LIVING AREA
FRONT GARAGE



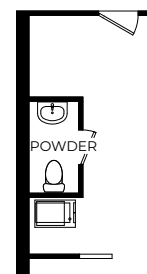
OPTIONAL FINISHED LOWER
LEVEL LIVING AREA
REAR GARAGE



OPTIONAL
REAR GARAGE
AT FIRST FLOOR



OPTIONAL
KITCHEN ISLAND



OPTIONAL
POWDER ROOM
AT LOWER LEVEL

