

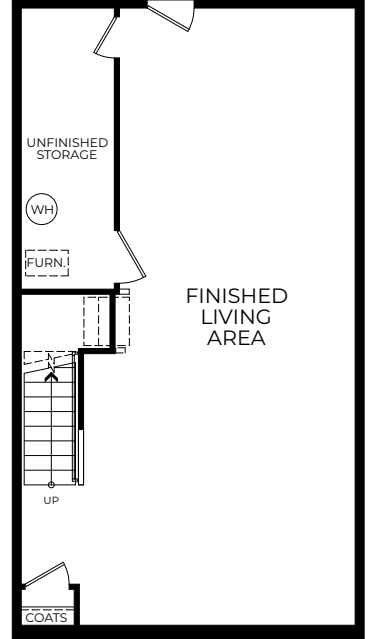
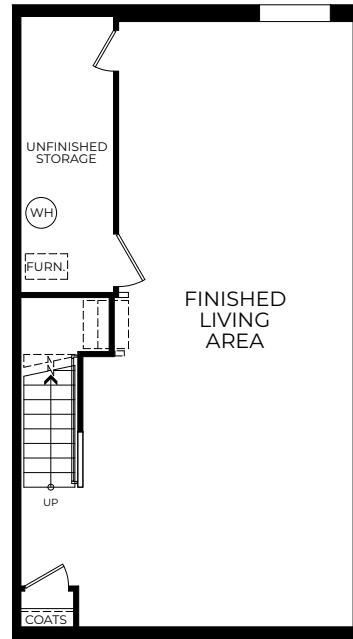
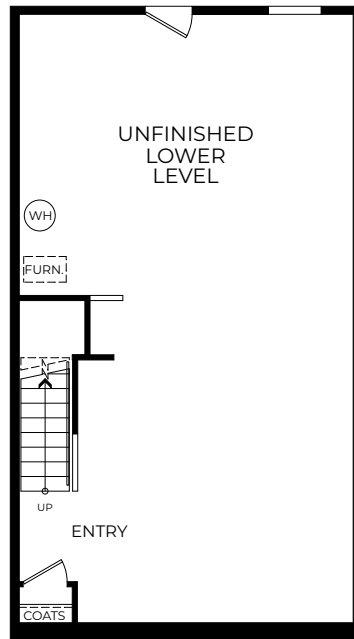
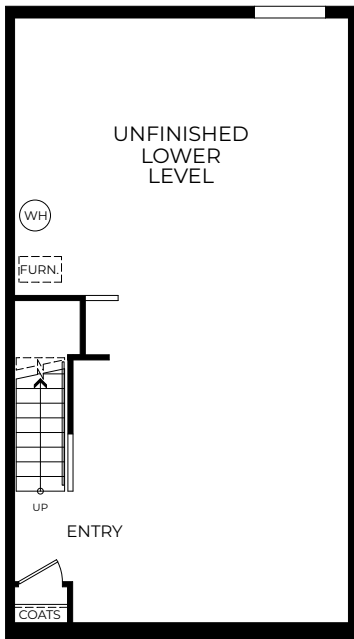




- 3 Bedrooms
- 1 Car Garage
- 2.5-3.5 Bathrooms
- 1,966-1,989 Finished Sq. Ft.



Visit marondahomes.com for more information. Floor plans and elevations are artist's renderings for illustrative purposes and not part of a legal contract. Features, sizes, options, and details are approximate and will vary from the homes as built. Optional items shown are available at additional cost. Maronda Homes reserves the right to change and/or alter materials, specifications, features, dimensions and designs without prior notice or obligation. ©2026 Maronda Homes, Inc. All Rights Reserved. 01/26

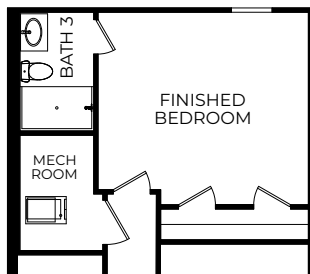


OPTIONAL UNFINISHED LOWER LEVEL NO GARAGE HIGH SIDE FRONT GARAGE

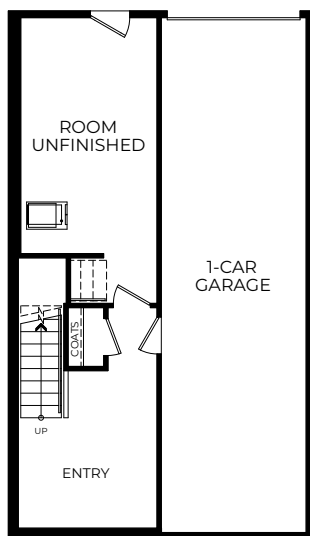
OPTIONAL UNFINISHED LOWER LEVEL NO GARAGE LOW SIDE FRONT GARAGE

OPTIONAL FINISHED LOWER LEVEL NO GARAGE HIGH SIDE FRONT GARAGE

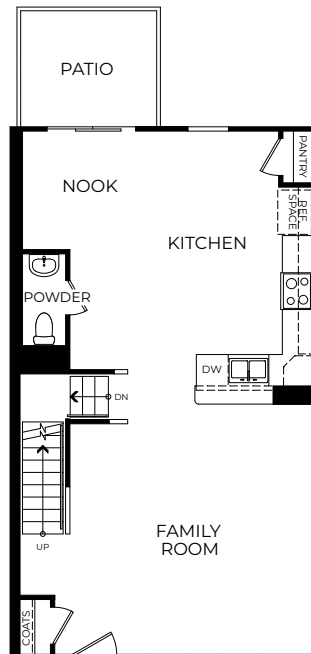
OPTIONAL FINISHED LOWER LEVEL NO GARAGE LOW SIDE FRONT GARAGE



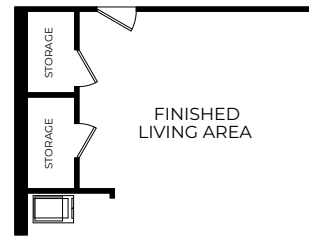
OPTIONAL FINISHED LOWER LEVEL BEDROOM AND BATH FRONT GARAGE



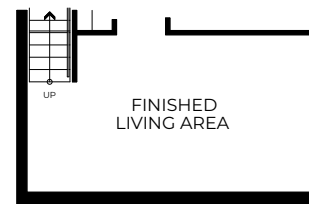
OPTIONAL LOWER LEVEL REAR GARAGE



OPTIONAL REAR GARAGE & NO GARAGE AT FIRST FLOOR ELEVATION A



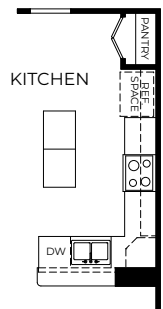
OPTIONAL FINISHED LOWER LEVEL LIVING AREA FRONT GARAGE



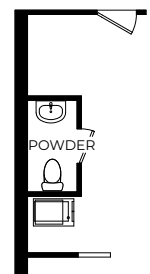
OPTIONAL FINISHED LOWER LEVEL LIVING AREA REAR GARAGE



OPTIONAL REAR GARAGE AT FIRST FLOOR



OPTIONAL KITCHEN ISLAND



OPTIONAL POWDER ROOM AT LOWER LEVEL

