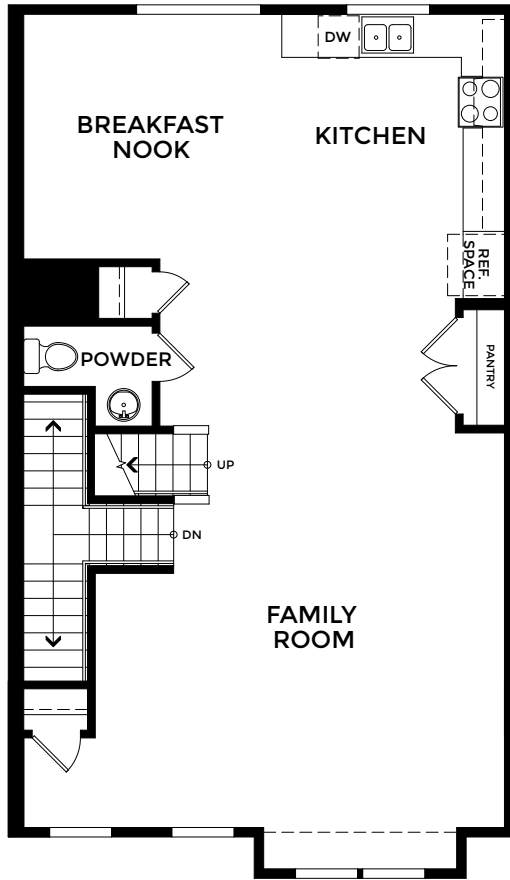


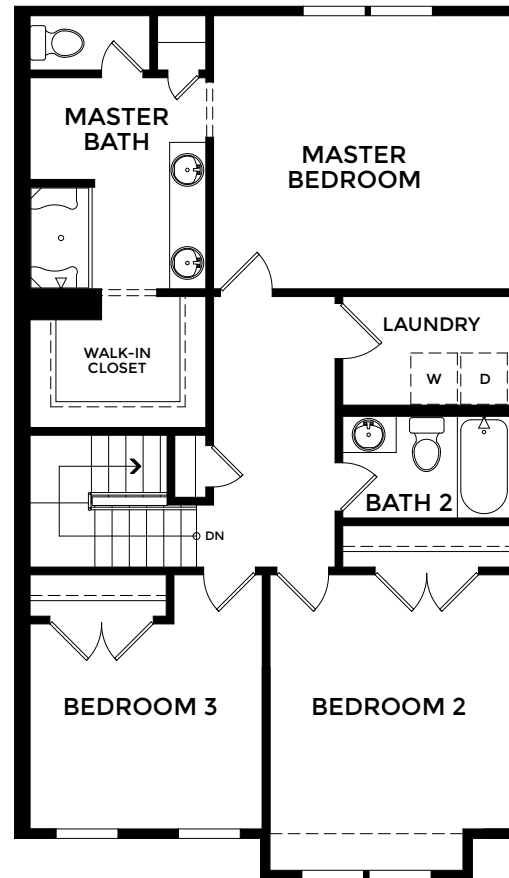
MARONDA
Homes

ST. PATRICK
Elevation E
The Townhome Series





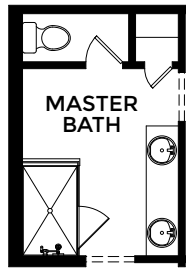
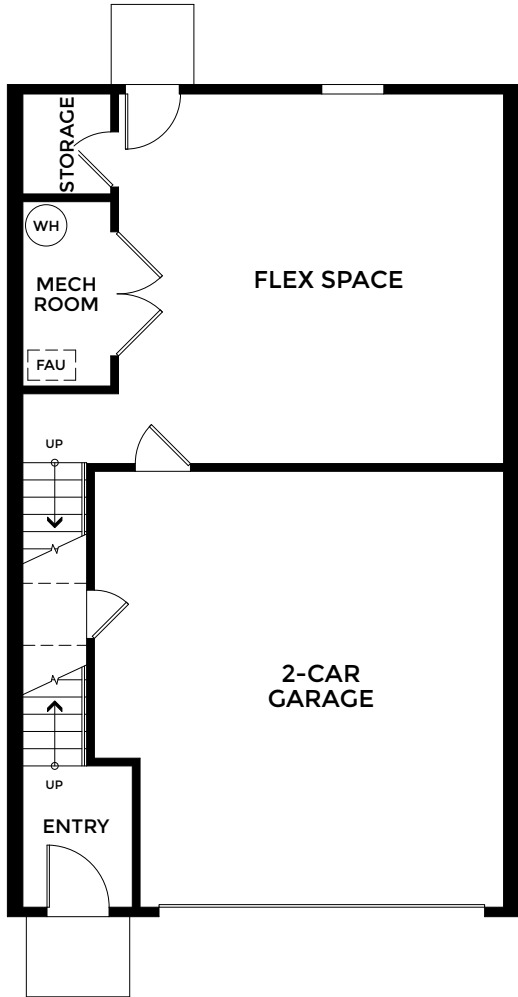
SECOND FLOOR



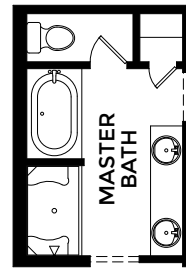
- 3-4 Bedrooms
- 2 Car Garage
- 2.5-3.5 Bathrooms
- 2,421-2,461 Finished Sq. Ft.



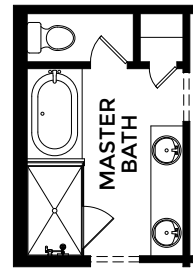
LOWER LEVEL



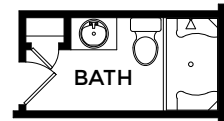
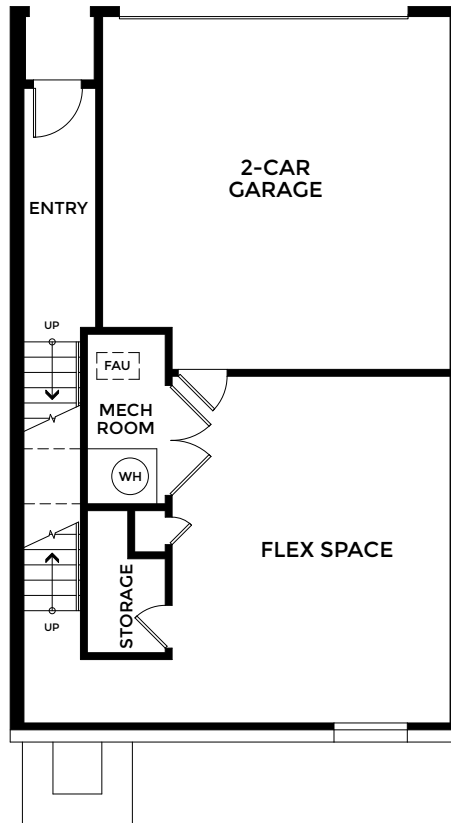
OPTIONAL
MASTER BATH
SILVER



OPTIONAL
MASTER BATH
SOAK TUB



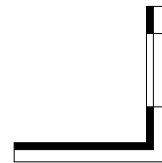
OPTIONAL
MASTER BATH
PLATINUM



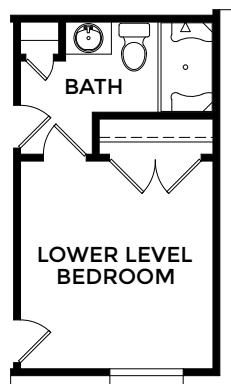
OPTIONAL
LOWER LEVEL
FLEX BATH



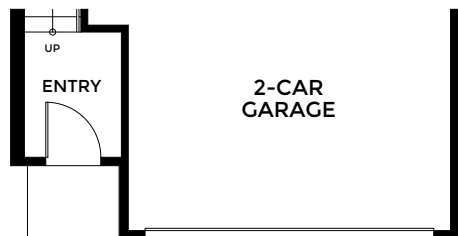
OPTIONAL
LOWER LEVEL
REAR GARAGE BATH



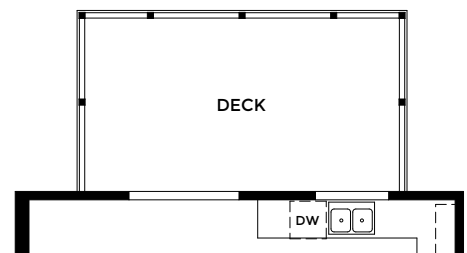
OPTIONAL
REAR GARAGE
EXTENSION



OPTIONAL
LOWER LEVEL
BEDROOM
REAR GARAGE



OPTIONAL
FRONT GARAGE
EXTENSION



BREAKFAST
DINE

OPTIONAL
10X18 COMPOSITE DECK

